



Peguis First Nation
CEC Lake Winnipeg Regulation Hearing
Some Additional Maps for Panel Presentation

Environment Canada – Watershed Map
http://www.ec.gc.ca/doc/publications/eau-water/COM1167/img/01LW_watershed_with_basins.jpg

Manitoba Government – Flood Infrastructure Map
http://www.gov.mb.ca/asset_library/en/spring_outlook/images/manitoba_flood_infrastructure_map.jpg

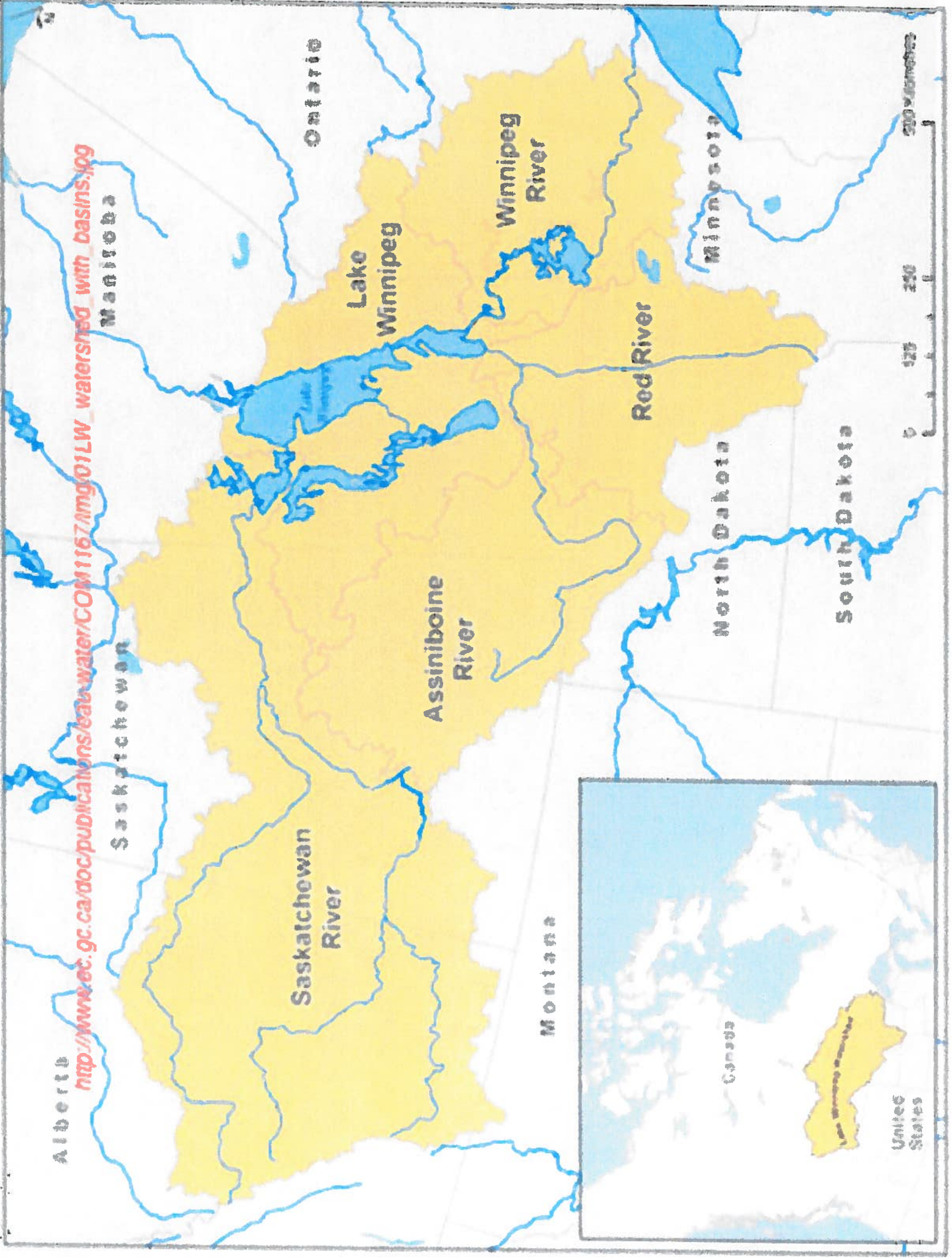
Wiki Commons – Red River Basin Map
<http://commons.wikimedia.org/wiki/File:Redrivernorthmap.png>

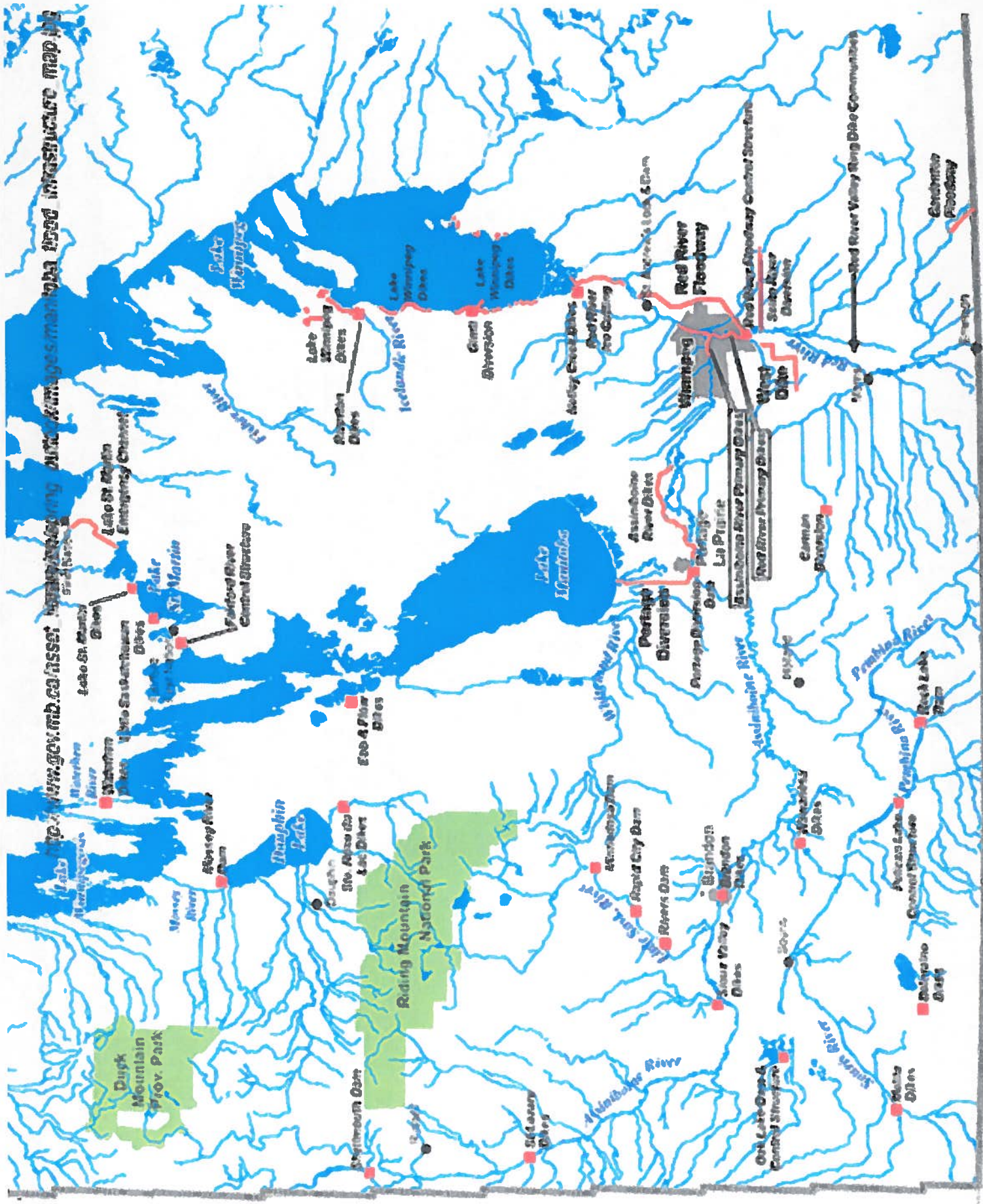
Manitoba Government – Manitoba Basins and Watershed Boundaries Map
<http://www.gov.mb.ca/mit/floodinfo/floodoutlook/images/watersheds.jpg>

9:30 AM, Thursday 19 March 2015
Clean Environment Commission – Lake Winnipeg Hearing
Fort Garry Hotel, Spa and Conference Centre, Concert Hall, 7th Floor

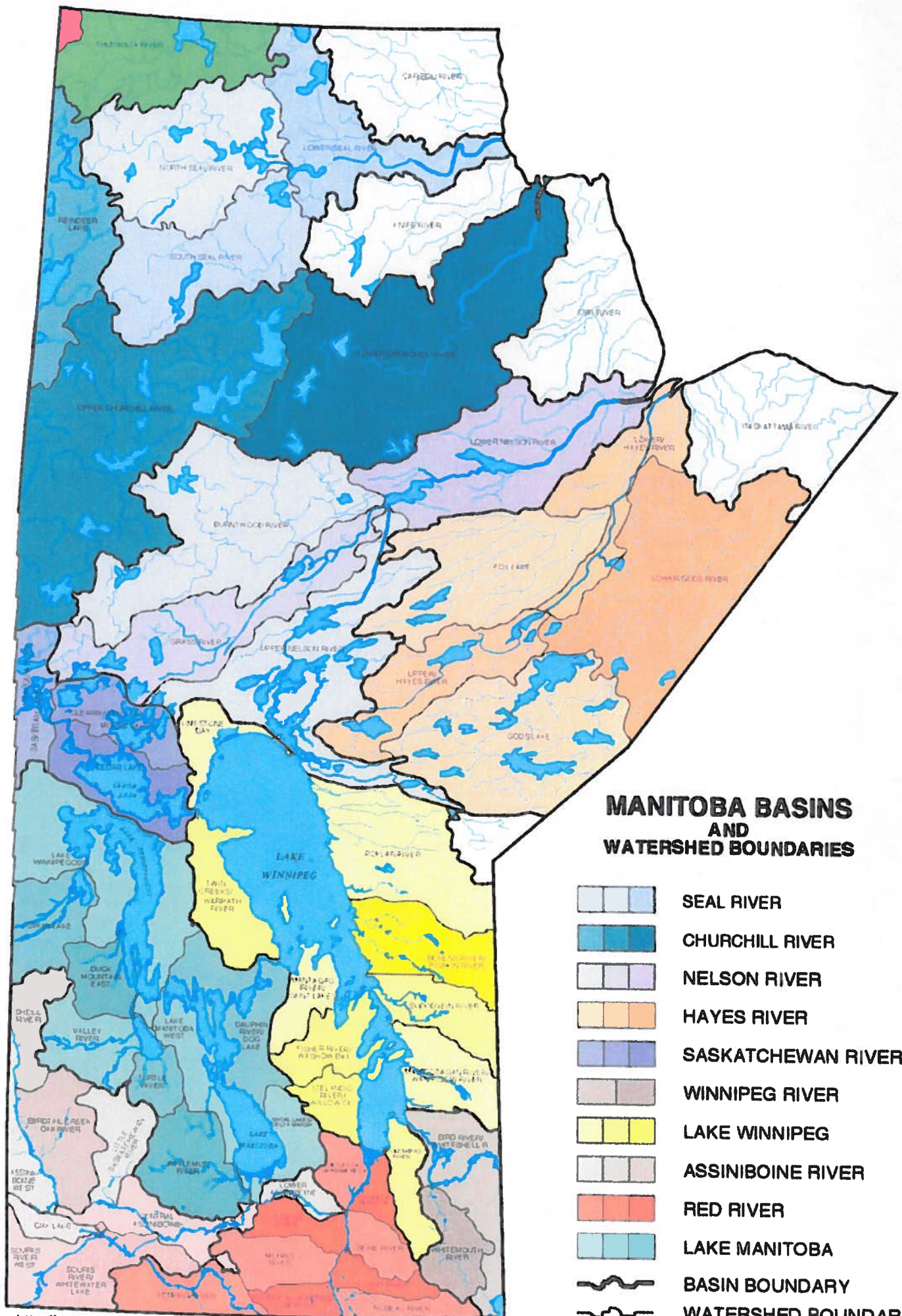
PROCEEDING NUMBER: PFN-004
File Name: LWR.

Date: MAR. 18. 2015
Received by: 
(Commission Secretary)










MANITOBA BASINS AND WATERSHED BOUNDARIES

-  SEAL RIVER
-  CHURCHILL RIVER
-  NELSON RIVER
-  HAYES RIVER
-  SASKATCHEWAN RIVER
-  WINNIPEG RIVER
-  LAKE WINNIPEG
-  ASSINIBOINE RIVER
-  RED RIVER
-  LAKE MANITOBA
-  BASIN BOUNDARY
-  WATERSHED BOUNDARY