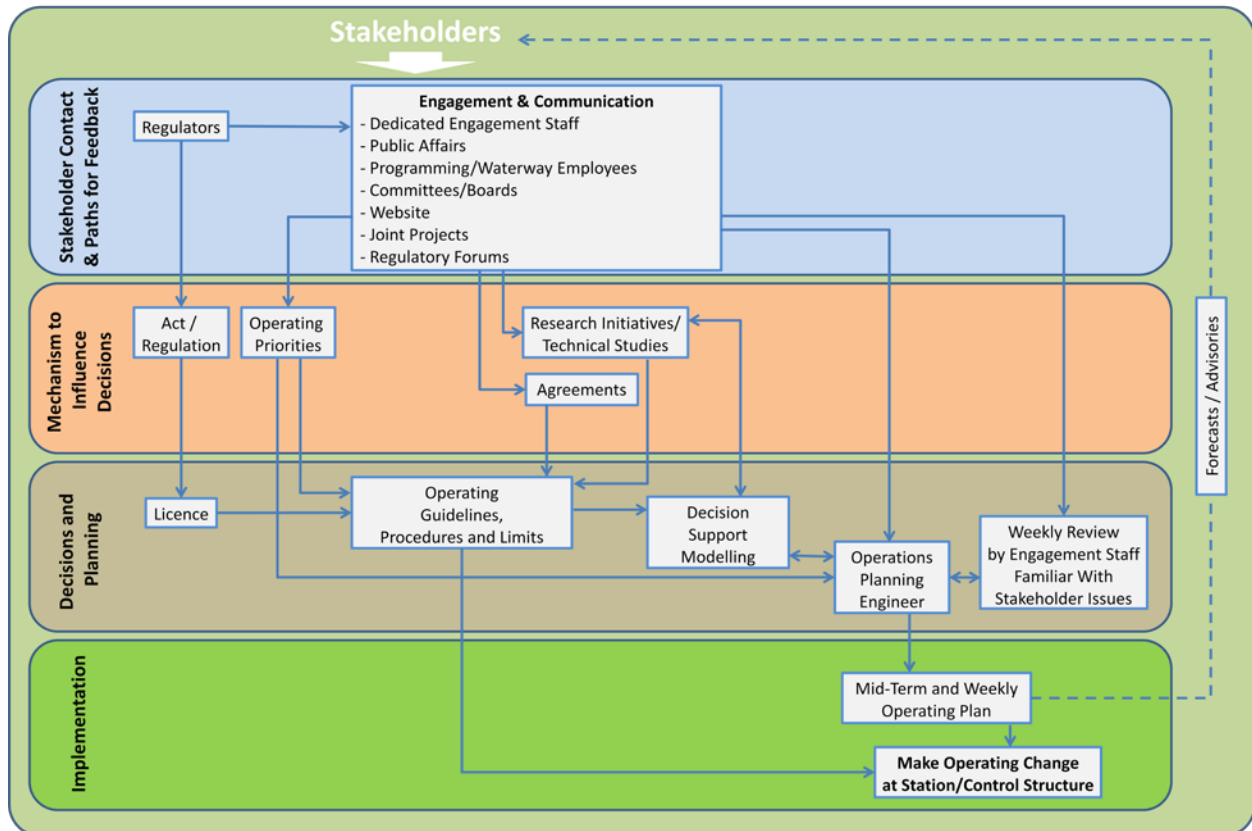


**Lake Winnipeg Regulation**

At the January 20, 2015 LWR technical workshop, Participants requested the following additional information: 1) Stakeholder Concerns Schematic, 2) Question from Dr. Tim Clark and 3) Lake Winnipeg Monthly Average Lake Winnipeg wind-eliminated water level chart showing dates of gauge installations.

1. Stakeholder Concerns Schematic



2. Question from Dr. Timothy Clark:

When they are incorporating external feedback into their planning process (Kevin discussed this in the first presentation), do they have any protocols for the incorporation of input from Aboriginal (First Nations and Métis) groups in the affected areas, and if so, what are they (and if they only have protocols for First Nations communities, what about the Métis?)?

Response:

Incorporating external feedback into our operational planning process includes input from impacted Aboriginal waterway communities, irrespective of whether they are First Nations

February 20, 2015

or Métis. Input is received as a result of agreements with communities (e.g. water regime provisions, on-going communication mechanisms, boards and committees). Input from Aboriginal groups is also obtained through direct contact with Corporate staff. This includes Aboriginal Relations Division’s field personnel and Hydraulic Operations or Public Affairs departments’ stakeholder engagement staff. Information from this input is considered throughout the operations planning process.

3.

**Observed Monthly Average Lake Winnipeg Wind-Eliminated Water Level**

