

O-Pipon-Na-Piwin Cree Nation Map Exhibits

MAP #1) O-Pipon-Na-Piwin Cree Nation Resource Area.

This map illustrates the South Indian Lake Registered Trapline Block and Treaty Land Entitlement selections of the O-Pipon-Na-Piwin Cree Nation.

The red line also illustrates how the Proponents Wuskwatim EIS Local Region crosses through the O-Pipon-Na-Piwin Cree Nation Resource Area.

MAP #2 Portion of the O-Pipon-Na-Piwin Cree Nation Resource Area included by the Proponents in the Wuskwatim EIS Local Region

The key map in the top left corner illustrates;

- a) The NCN Resource Management Area in yellow,
- b) The outline of the OPCN Resource Area with individual traplines in purple,
- c) The area of the OPCN Resource Area overlapped by the Proponents Local Region in orange,
- d) The Local Region outline encompassing the NCN RMA and the small orange portion of the OPCN Resource Area.

The main map is the portion of the OPCN Resource Area that is overlapped by the Proponents Local Region. (orange in key map)

This main map illustrates the OPCN Treaty Land Entitlement selections, the SIL commercially fished lakes, the SIL trapline boundaries, and the Manitoba Hydro water power reserve lying in this South Indian Lake portion of the Local Region.

O-PIPON-NA-PIWIN CREE NATION
COMMERCIAL HARVESTING IN THE LOCAL REGION

O-PIPON-NA-PIWIN CREE NATION TRAPLINES IN SIL RESOURCE AREA
PORTION OF LOCAL REGION

<u>Registered Trapline Number</u>	<u>Line Licence Holder</u>	<u>Address</u>
3 entirely	Abraham Tait L Bruce Tait H	South Indian Lake
4 entirely	Leo Linklater L	South Indian Lake
5 entirely	Bruce Taite S	South Indian Lake
7 entirely	Rod Dumas L Michael Dumas H	South Indian Lake
8 entirely	Josephine Dumas H	South Indian Lake
43 entirely	Steve Ducharme H	South Indian Lake
21 entirely	Community	South Indian Lake
1 partially	Oscar Anderson L	South Indian Lake
33 partially	Phillip Moose S	South Indian Lake
35 partially	Randy Moose L	South Indian Lake
9 partially	Howard Dumas L	South Indian Lake

**O-PIPON-NA-PIWIN CREE NATION LAND SELECTIONS
IN SIL RESOURCE AREA PORTION OF LOCAL REGION**

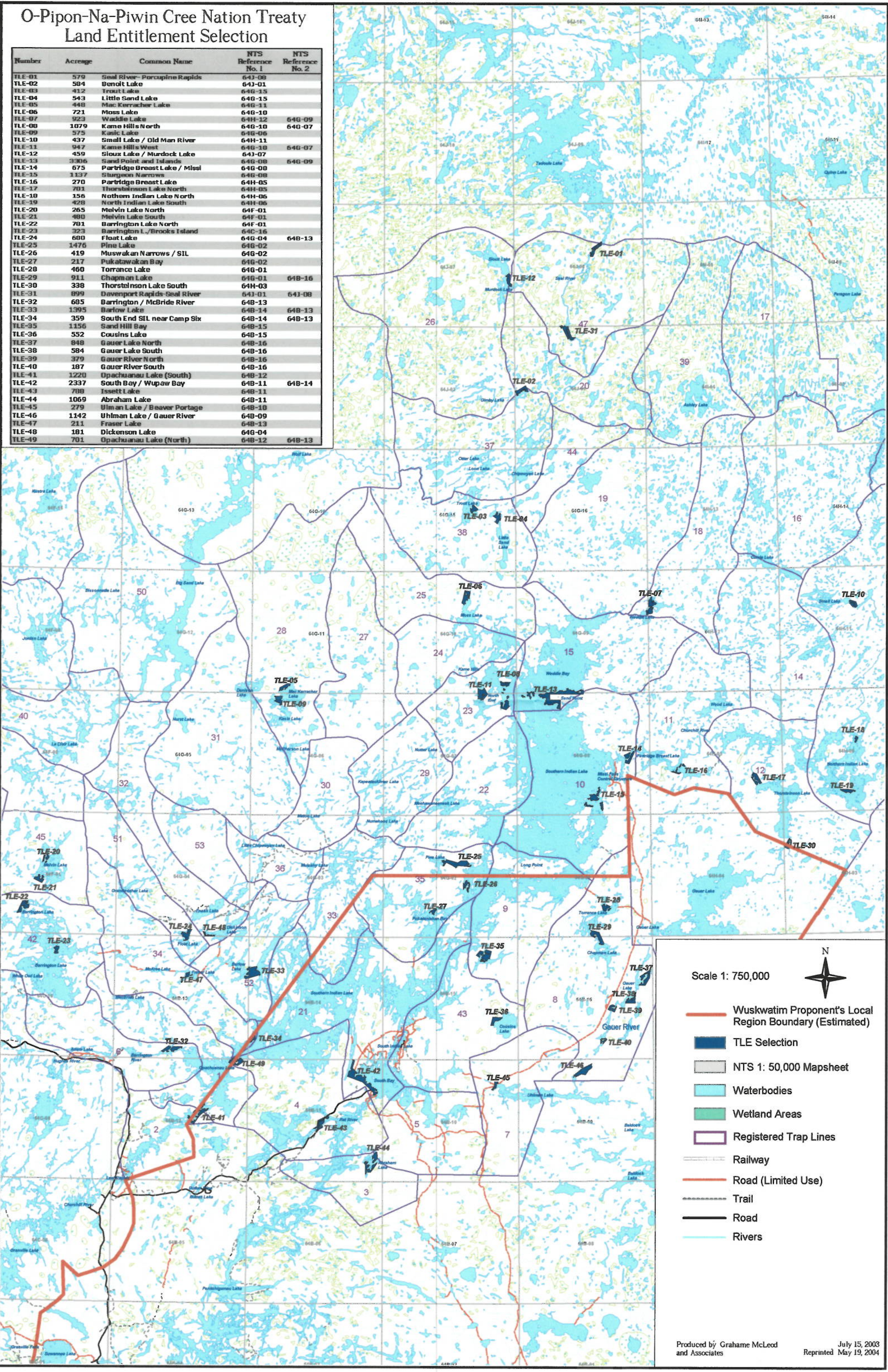
<u>Land Selection Number</u>	<u>Land Selection Name</u>	<u>Acreage</u>
92-01	Community of South Indian Lake	4,982 acres
TLE 26	Muswakan Narrows	410 acres
TLE 27	Pukatawagan Bay	216 acres
TLE 28	Torrance Lake	460 acres
TLE 29	Chapman Lake	911 acres
TLE 34	South End SIL near Camp Six	358 acres
TLE 35	Sand Hill Bay	1,156 acres
TLE 36	Cousins Lake	552 acres
TLE 37	Gauer Lake North	848 acres
TLE 38	Gauer Lake South	584 acres
TLE 39	Gauer River North	376 acres
TLE 40	Gauer River South	187 acres
TLE 41	Opachuanau Lake (South)	1,217 acres
TLE 42	South Bay/ Wupaw Bay	2,337 acres
TLE 43	Issett Lake	788 acres
TLE 44	Abraham Lake	1,061 acres
TLE 45	Uhlman Lake / Beaver Lake	278 acres
TLE 46	Uhlman Lake / Gauer River	1,131 acres
TLE 49	Opachuanau Lake (North)	701 acres
TOTAL	19 selections	18,533 acres

**O-PIPON-NA-PIWIN CREE NATION COMMERCIALY FISHED LAKES IN SIL
RESOURCE AREA PORTION OF LOCAL REGION**

<u>COMMERCIAL FISHING LAKE</u>	<u>LICENCE HOLDER</u>	<u>QUOTA</u>
Torrance Lake	Darryl Moose	5,500
Chapman Lake	Edward W. Dumas	4,600
South Indian Lake	116 names	419,600
Pine Lake	Kelly Baker Sr. Lloyd Clee	7,000
Uhlman Lake	Darryl Dumas Brian Wood Thomas Wood Vincent Wood Wilbur Wood	13,800
Abraham Lake	Bruce Tait	4,500
Opachuanau Lake	Keith Anderson John John Baker Oliver Bighetty Ronald Dysart Murdo Soulier Rosalie Soulier	28,500
<u>TOTAL</u>		<u>483,500 kg</u>

O-Pipon-Na-Piwin Cree Nation Treaty Land Entitlement Selection

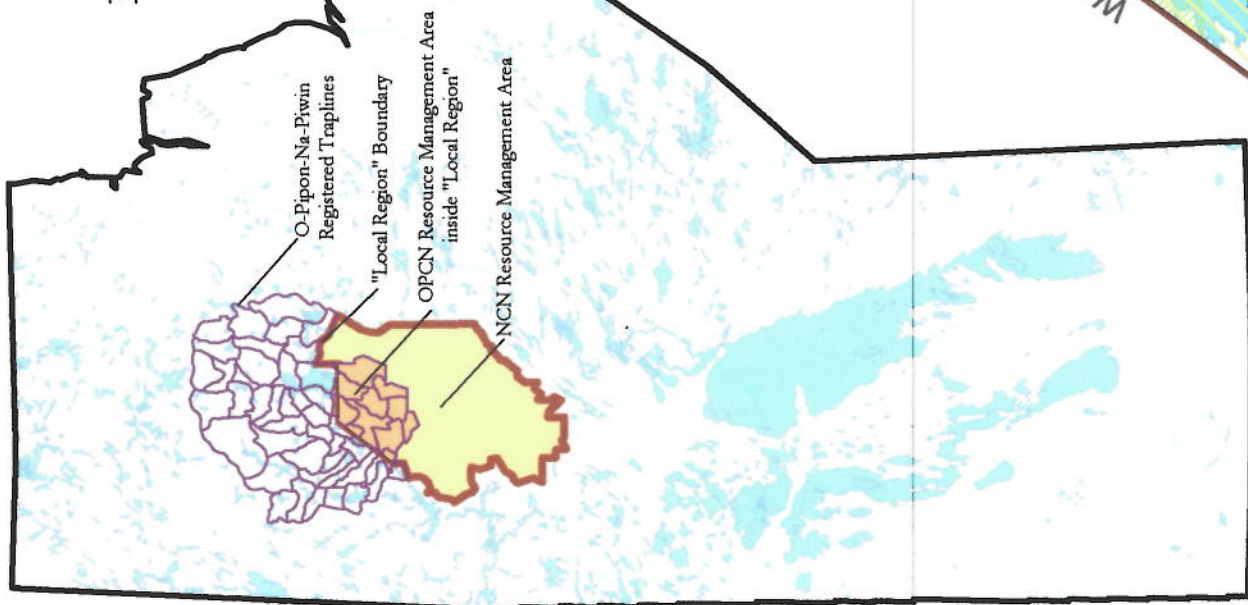
Number	Acreage	Common Name	NTS Reference No. 1	NTS Reference No. 2
TLE-01	579	Seal River- Porcupine Rapids	64J-00	
TLE-02	584	Benoit Lake	64J-01	
TLE-03	412	Trouit Lake	64G-15	
TLE-04	543	Little Sand Lake	64G-15	
TLE-05	448	Mac Kerraicher Lake	64G-11	
TLE-06	721	Moss Lake	64H-10	
TLE-07	923	Waddle Lake	64H-12	64G-09
TLE-08	1079	Kame Hills North	64H-10	64G-07
TLE-09	575	Kasic Lake	64G-06	
TLE-10	437	Small Lake / Old Man River	64H-11	
TLE-11	947	Kame Hills West	64G-10	64G-07
TLE-12	459	Sioux Lake / Murdock Lake	64J-07	
TLE-13	3306	Sand Point and Islands	64G-00	64G-09
TLE-14	675	Partridge Breast Lake / Missi	64G-00	
TLE-15	1137	Sturgeon Narrows	64G-08	
TLE-16	270	Partridge Breast Lake	64H-05	
TLE-17	701	Thorsteinson Lake North	64H-05	
TLE-18	156	North Indian Lake North	64H-06	
TLE-19	428	North Indian Lake South	64H-06	
TLE-20	265	Melvin Lake North	64F-01	
TLE-21	480	Melvin Lake South	64F-01	
TLE-22	701	Barrington Lake North	64F-01	
TLE-23	323	Barrington L./Brooks Island	64C-16	
TLE-24	600	Float Lake	64G-04	64B-13
TLE-25	1476	Pine Lake	64G-02	
TLE-26	419	Muskawan Narrows / SIL	64G-02	
TLE-27	217	Pukatawakan Bay	64G-02	
TLE-28	460	Torrance Lake	64G-01	
TLE-29	911	Chapman Lake	64G-01	61B-16
TLE-30	338	Thorsteinson Lake South	64H-03	
TLE-31	899	Davenport Rapids-Seal River	64J-01	64I-08
TLE-32	685	Barrington / McBride River	64B-13	
TLE-33	1395	Barlow Lake	64B-14	64B-13
TLE-34	359	South End SIL near Camp Six	64B-14	64B-13
TLE-35	1156	Sand Hill Bay	64B-15	
TLE-36	552	Cousins Lake	64B-15	
TLE-37	848	Gauer Lake North	64B-16	
TLE-38	584	Gauer Lake South	64B-16	
TLE-39	379	Gauer River North	64B-16	
TLE-40	187	Gauer River South	64B-16	
TLE-41	1220	Opachuanau Lake (South)	64B-12	
TLE-42	2337	South Bay / Wupaw Bay	64B-11	64B-14
TLE-43	788	Issett Lake	64B-11	
TLE-44	1069	Abraham Lake	64B-11	
TLE-45	279	Uiman Lake / Beaver Portage	64B-10	
TLE-46	1142	Uhlman Lake / Gauer River	64B-09	
TLE-47	211	Fraser Lake	64B-13	
TLE-48	181	Dickenson Lake	64G-04	
TLE-49	701	Opachuanau Lake (North)	64B-12	64B-13



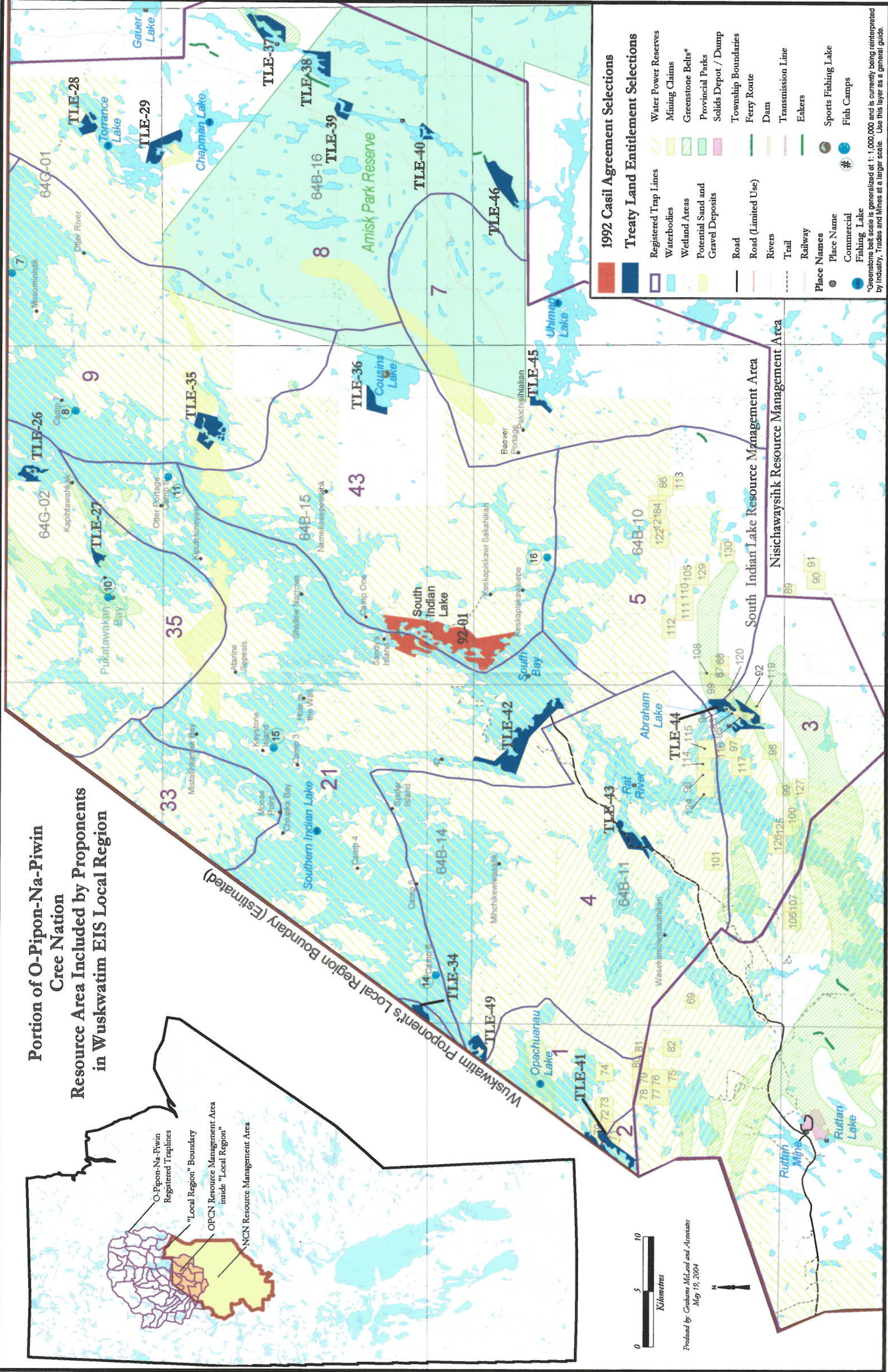
Scale 1: 750,000

- Wuskwatim Proponent's Local Region Boundary (Estimated)
- TLE Selection
- NTS 1: 50,000 Mapsheet
- Waterbodies
- Wetland Areas
- Registered Trap Lines
- Railway
- Road (Limited Use)
- Trail
- Road
- Rivers

Portion of O-Pipon-Na-Piwin Cree Nation Resource Area Included by Proponents in Wuskwatim EIS Local Region



Wuskwatim Proponent's Local Region Boundary (Estimated)



1992 Casil Agreement Selections

Treaty Land Entitlement Selections

- Registered Trap Lines
- Waterbodies
- Wetland Areas
- Potential Sand and Gravel Deposits
- Road
- Road (Limited Use)
- Rivers
- Trail
- Railway
- Place Names
- Place Name
- Commercial
- Fishing Lake
- Water Power Reserves
- Mining Claims
- Greenstone Belts*
- Provincial Parks
- Solids Depot / Dump
- Township Boundaries
- Ferry Route
- Dam
- Transmission Line
- Eskers
- Sports Fishing Lake
- Fish Camps

*Greenstone belt scale is generalized at 1:1,000,000 and is currently being reinterpreted by Industry, Trades and Mines at a larger scale. Use this layer as a general guide.

0 5 10
Kilometres

Produced by: *Grahame McLeod and Associates*
May 19, 2004

N